



Views of concrete hard and weed growth
between the hard and the dam

DROUGHT CONDITIONS AT THE EYE BROOK RESERVOIR
AUGUST 1976

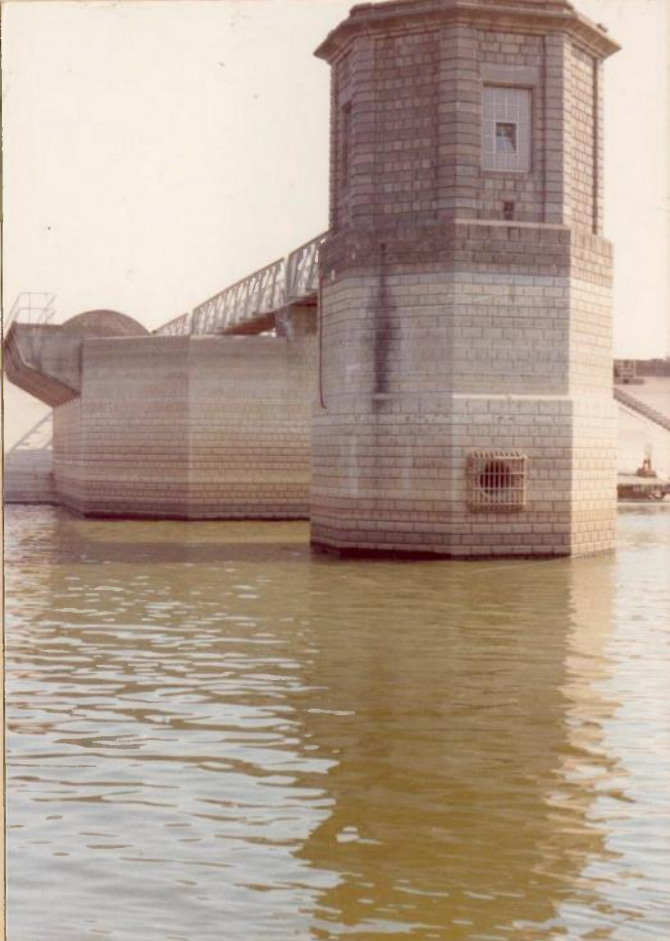




Water Level - OD Liverpool 210.09 ft.



Water Level - OD Liverpool 210.09 ft.

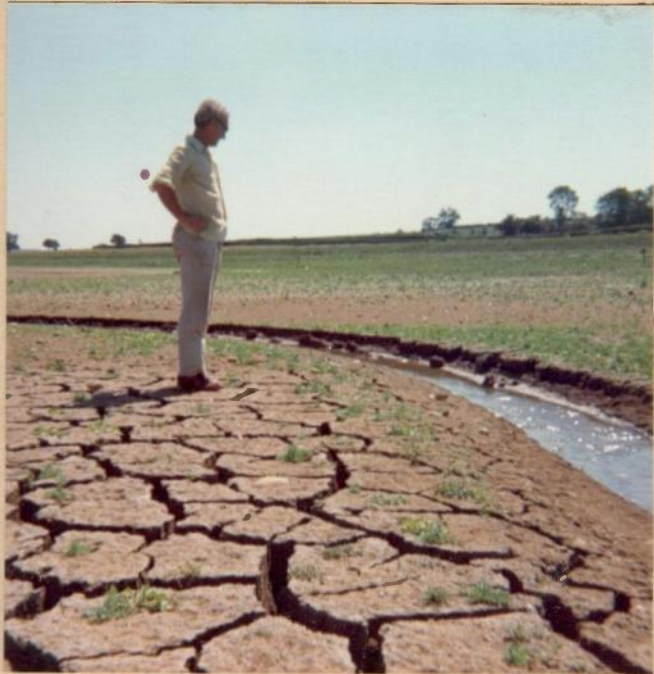


Water Level - OD Liverpool 210.09 ft.



Water Level - OD Liverpool 210.09 ft.

Laurence Watson









Views of the Stoke Dry footbridge and
surrounding
area including the Eye Brook trickle



Views of the Stoke Dry footbridge and
surrounding
area including the Eye Brook trickle



CRACKED MUD FLATS STOKE DRY END OF
RESERVOIR July 1976



Exposed stone work of old bridge

CRACKED MUD FLATS STOKE DRY END OF
RESERVOIR July 1976



Taken from the Old Bridge







Liz Divine & Gillian Lyn - Secretaries from Brigstock
(Drought Year 1976)



Remains of Stoke Dry Footbridge August 1976.
The view is taken from virtually the same
position as photograph above.



Reproduction of a photograph of the Stoke Dry footbridge before the Eye Brook Reservoir was built. Original photograph in 'Country Life' dated 23rd December, 1939.